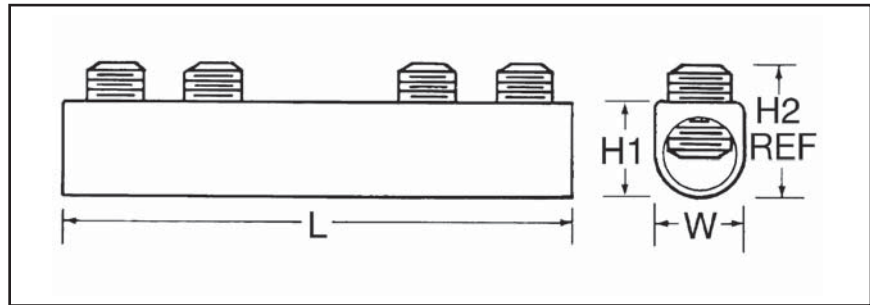
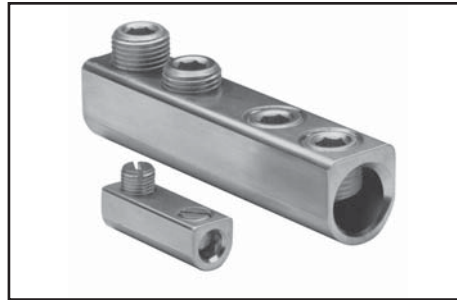


**TYPE AMS**

**DUAL RATED SPLICER/REDUCER**

For Copper and Aluminum Cable

All splicer/reducers are dual rated for use with aluminum and copper conductors and are constructed from high strength, tin plated aluminum. PENETROX™ oxide inhibiting joint compounds are recommended for all aluminum applications.



**Features & Benefits**

- All connectors are tin-plated
  - ◊ Provide low contact resistance and prevents galvanic corrosion
- Connectors feature rounded bottoms
  - ◊ Facilitates taping
- Solid center barrier
  - ◊ Prevents contact of dissimilar metals
- Large screw diameters
  - ◊ Ensures greater surface contact with wires for maximum pullout force
- Large cable ranges
  - ◊ Each splice is also an effective reducing connector

Catalog Number	Wire Range	L	W	H1	H2 Max	Number of Screws	Screw Diameter	Hex Size
	Aluminum & Copper							
<b>AMS-2*</b>	14 AWG-2 AWG	1-19/32	9/16	9/16	0.79	2	3/8	Slot
<b>AMS-0*</b>	14 AWG-1/0	1-29/32	3/4	3/4	0.86	2	7/16	Slot
<b>AMS-4/0</b>	6 AWG-4/0 AWG	2-5/16	1	1-3/32	1.28	2	9/16	5/16
<b>AMS-250</b>	6 AWG-250 kcmil	4-3/32	1	1-3/32	1.29	4	5/8	5/16
<b>AMS-350</b>	6 AWG-350 kcmil	4-11/32	1	1-3/32	1.3	4	11/16	5/16
<b>AMS-500</b>	3/0 AWG-500 kcmil	4-25/32	1-1/4	1-3/8	1.48	4	13/16	3/8
<b>AMS-750</b>	250 kcmil-750 kcmil	6-1/6	1-7/16	1-5/8	1.98	4	15/16	1/2
<b>AMS-1000</b>	500 kcmil-1000 kcmil	8-11/16	1-21/32	1-7/8	2.34	6	1-1/8	9/16

\* Slotted Screws. H2 measured with maximum conductors, reference only. ✓ Complies with NFPA 78-86.

**Blue highlighted items are industry standard and most frequently ordered.**